

# Housing Needs of Youth Aging-Out of Foster care

Patrick J. Fowler  
pfowler3@depaul.edu

# Detroit Aging-Out Study

## Research Aims

- Assess prevalence of housing problems
- Identify pathways to stable housing
- Examine association between housing stability and psychosocial outcomes



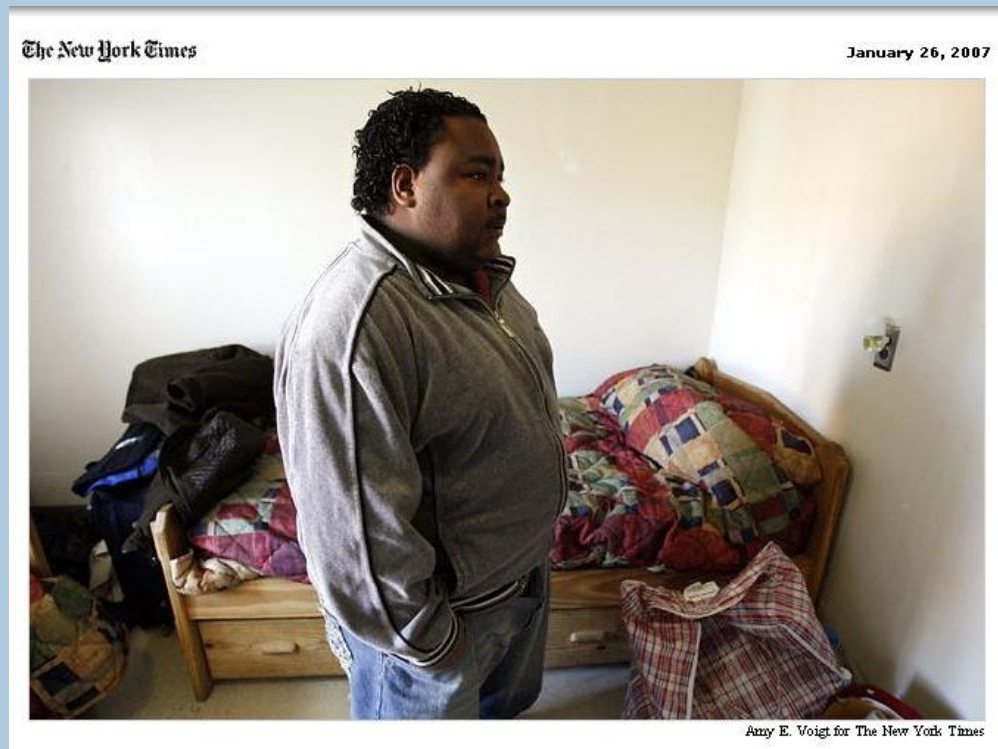
# Detroit Aging Out Study

- Record Review
  - All cases closed in 2002 and 2003
  - Interviewed in 2005 and 2006
  - Detroit metropolitan area
- Structured 30-minute phone interviews

# Detroit Aging-Out Study

## Housing Assessment

- 17% literally homeless
  - 8 x national prevalence rate
- Additional 33% precariously housed



# Detroit Aging-Out Study

- What about housing changes over time?
  - Impact on functioning?

# Detroit Aging-Out Study

“It started out pretty easy. When I lost my job, I had little trouble with my finances, but my father helped me out, so I'm doing all right.”

# Housing Trajectories

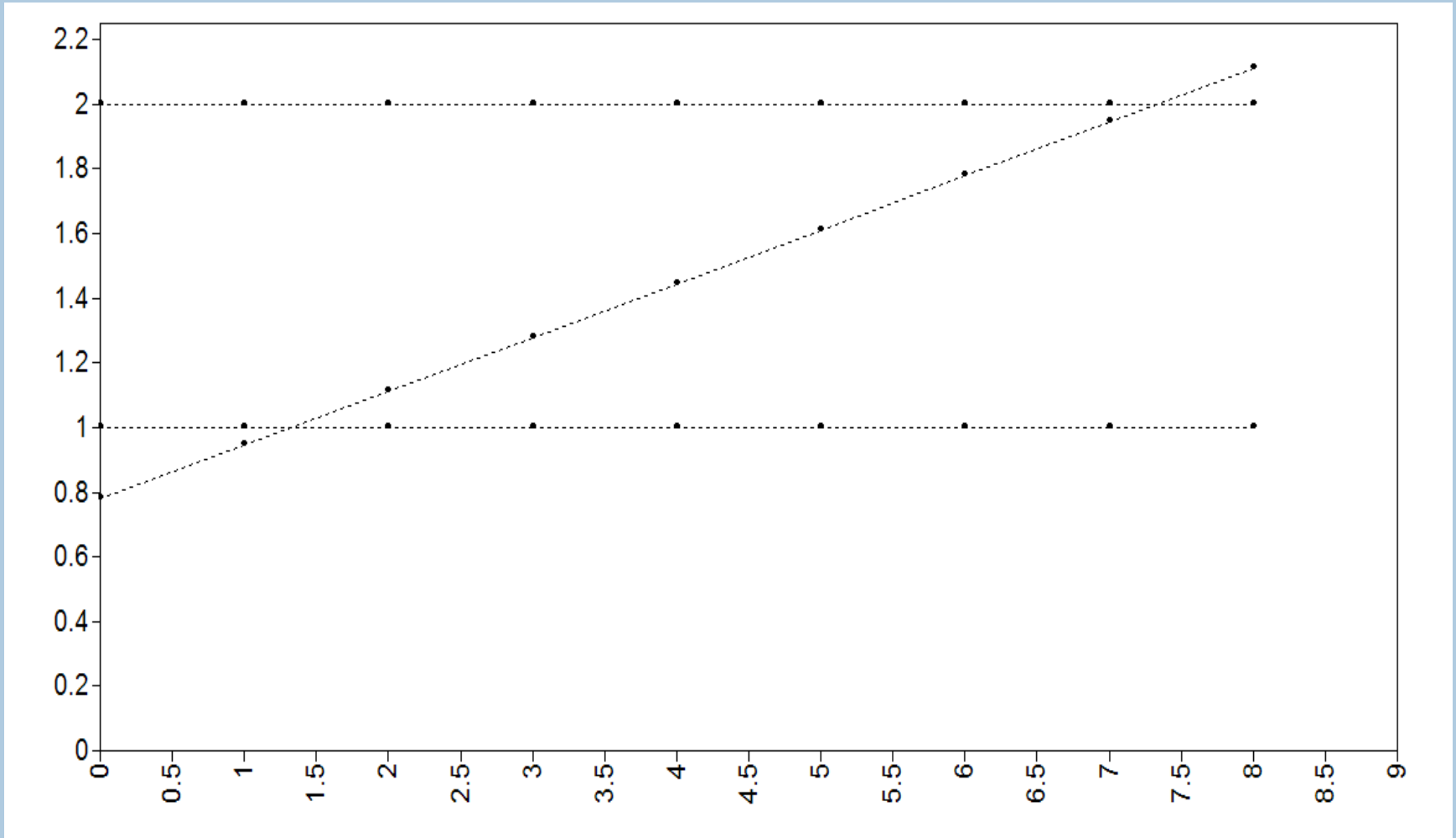
“It's tough out here for me.

I've got to do stuff on my own and make my own money. I have no place to live, no transportation, no place to go.”

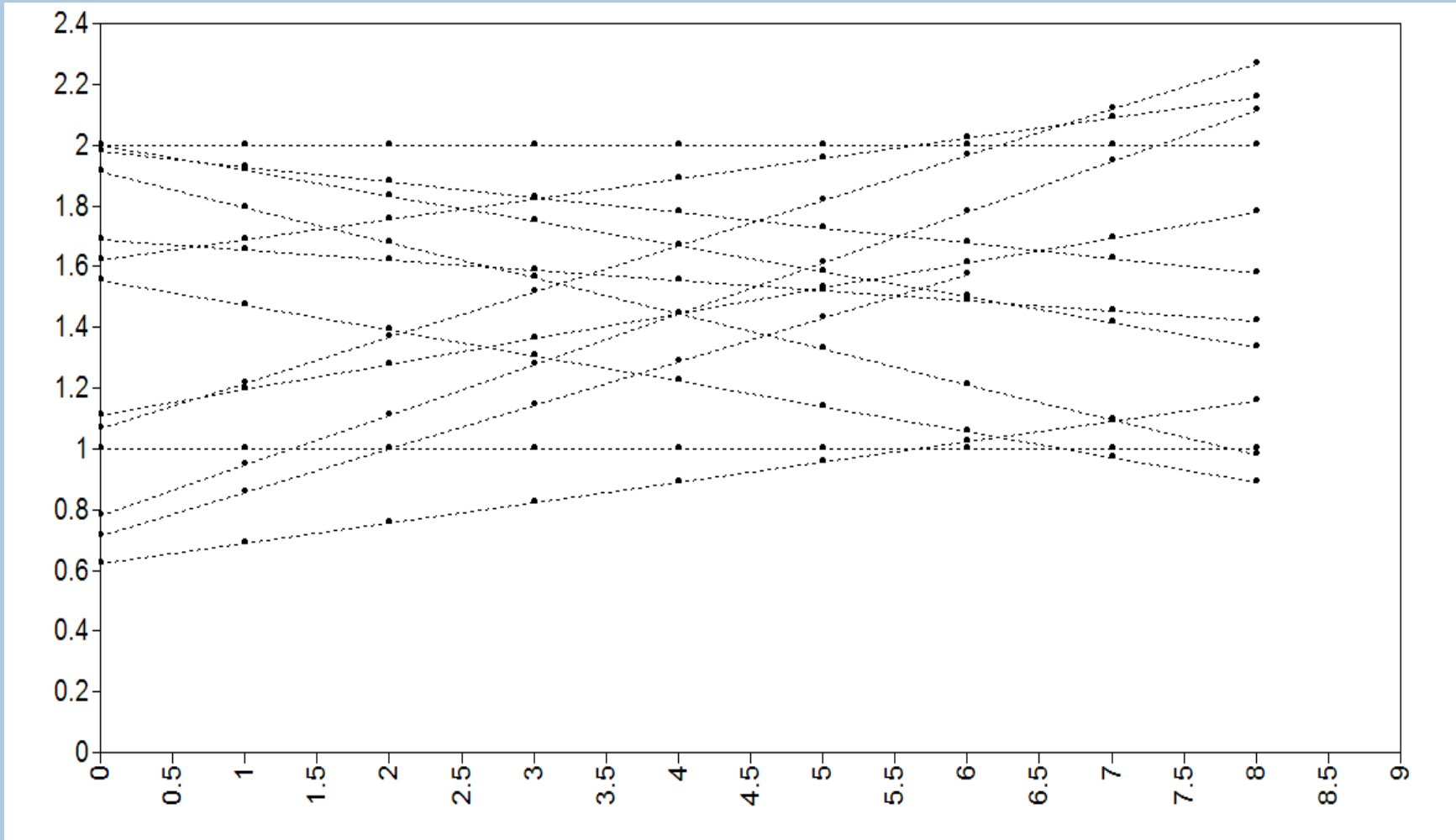
# Housing Trajectories

- Trichotomized
  1. Literally homeless
  2. Precariously housed
  3. Stably housed
- Plotted at 3 month intervals over two years

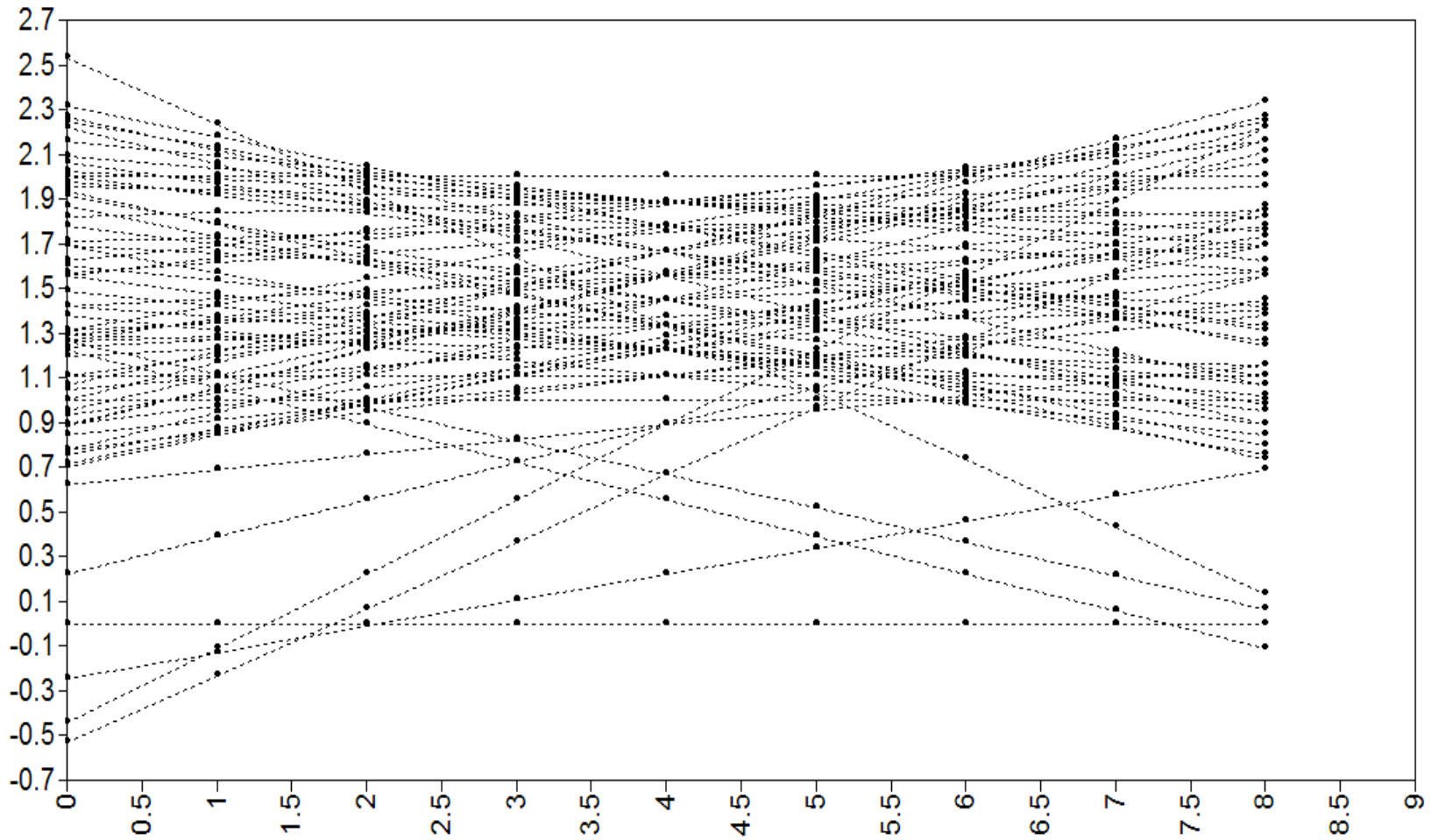
# Housing Trajectories (1%)



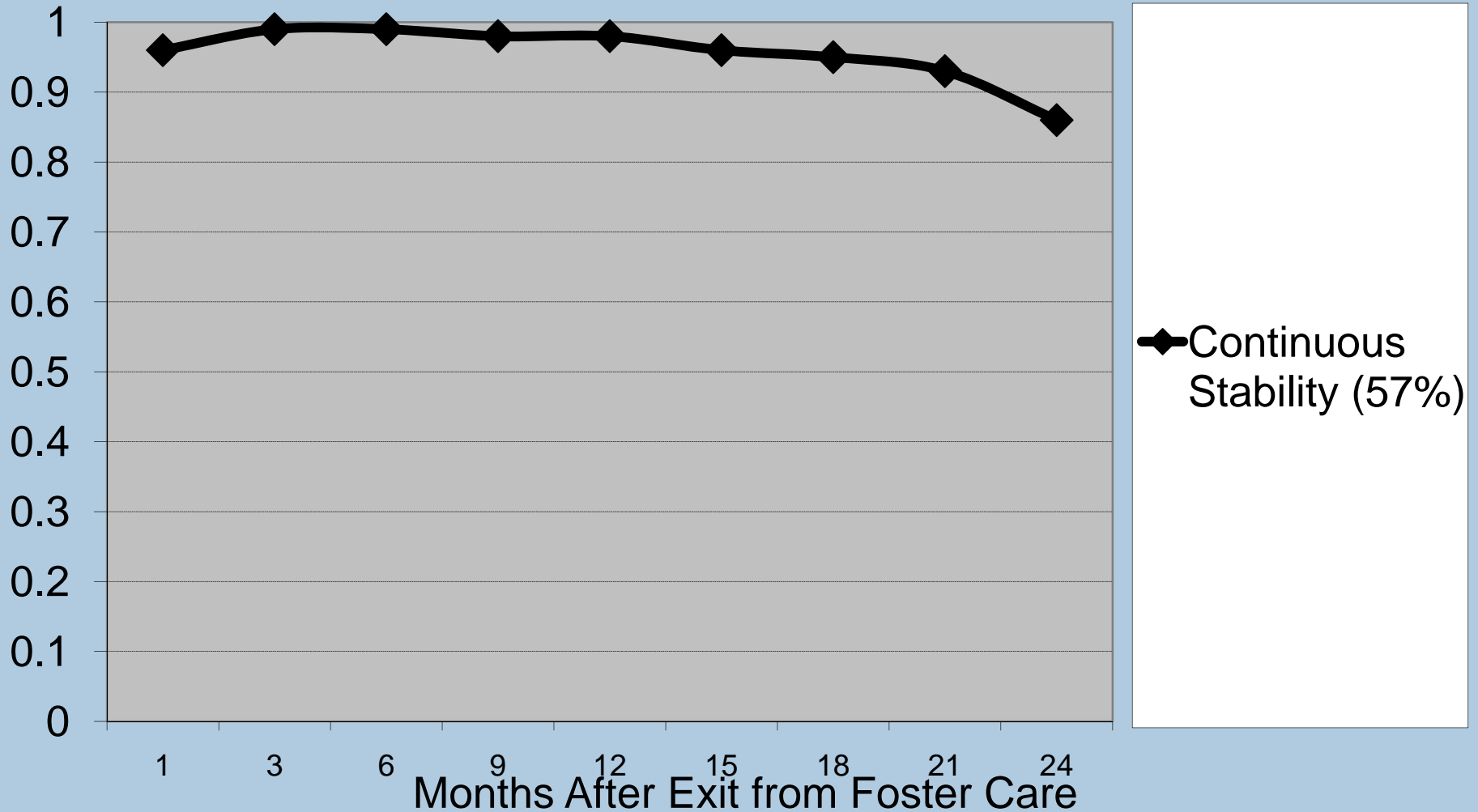
# Housing Trajectories (10%)



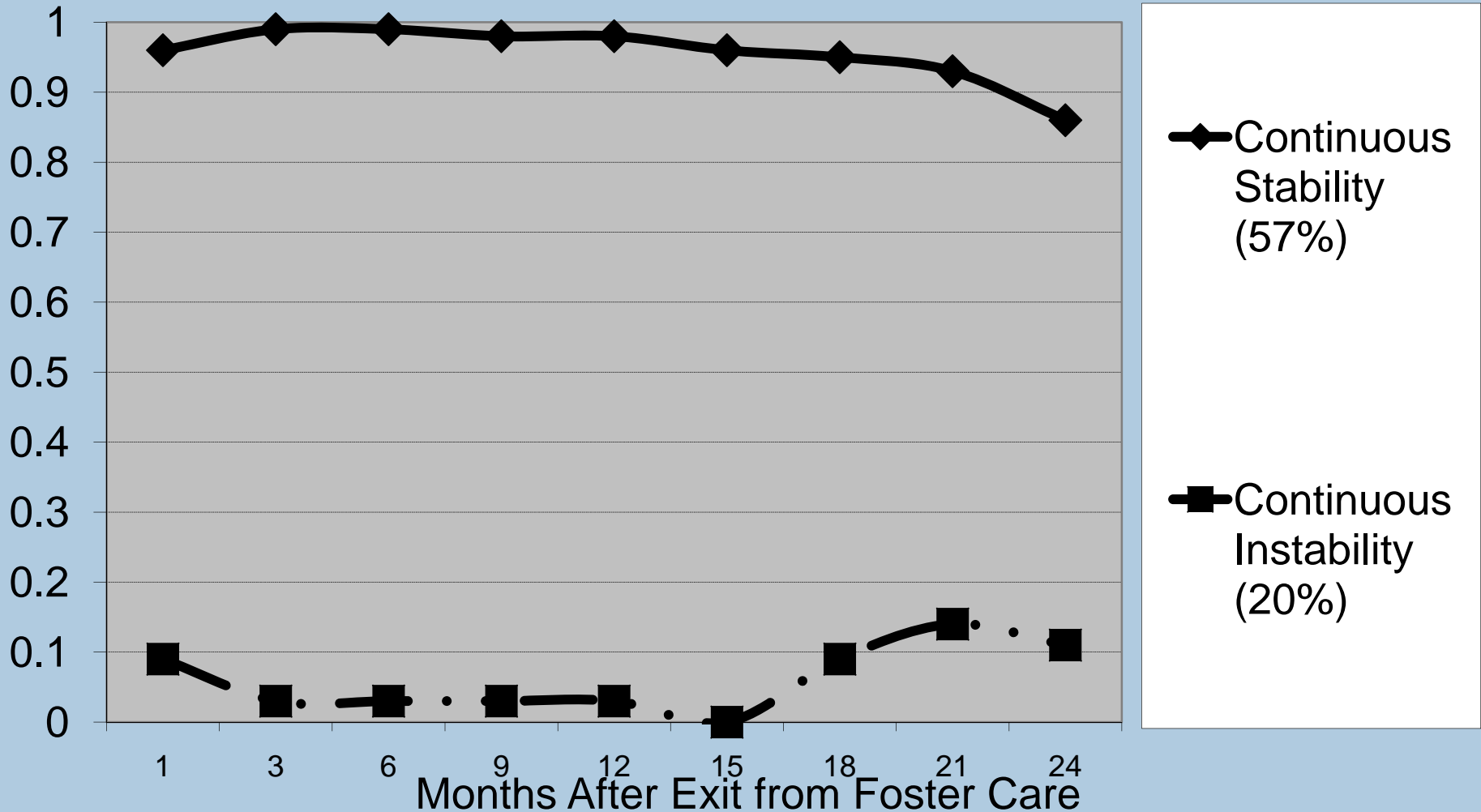
# Housing Trajectories (100%)



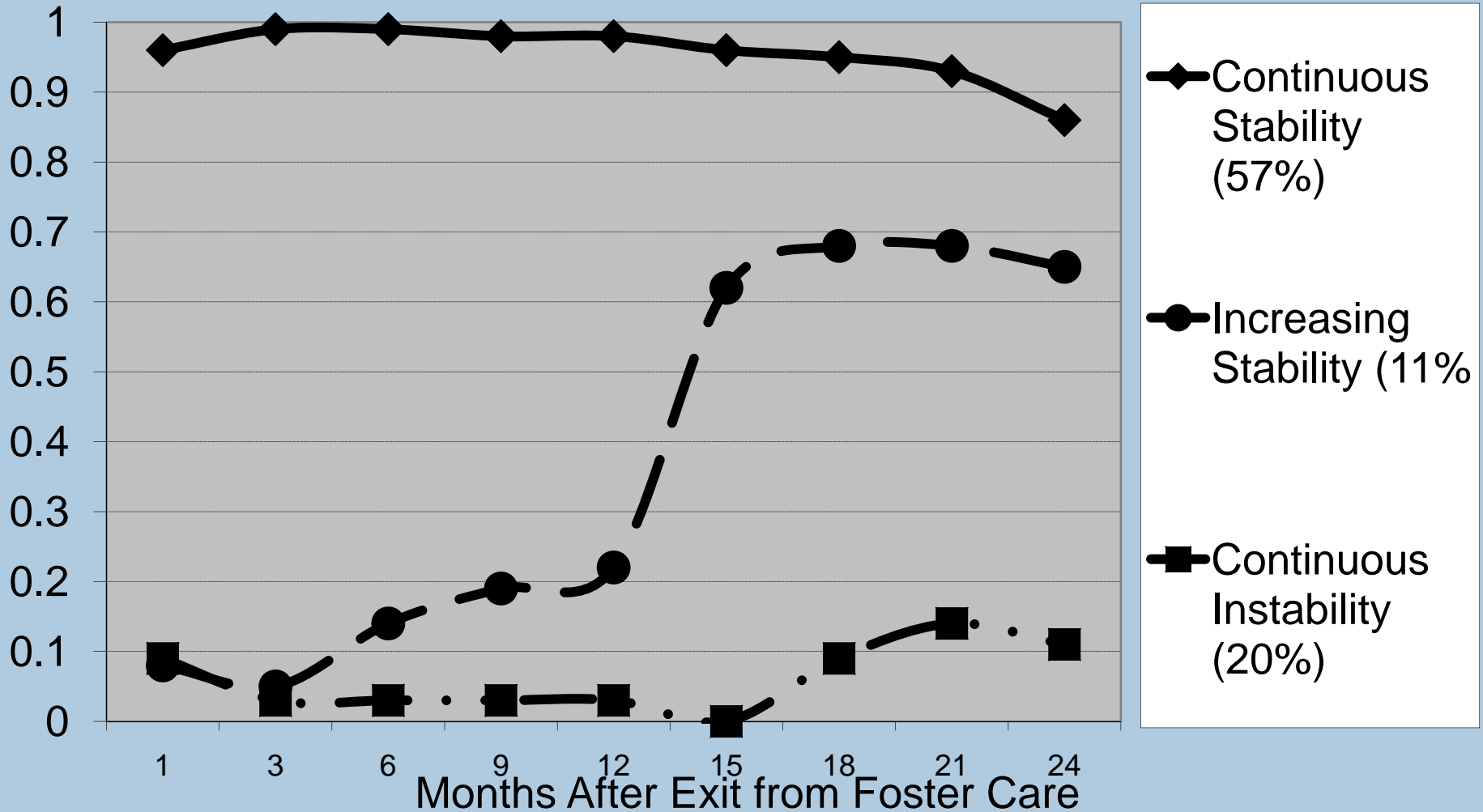
# Housing Trajectories



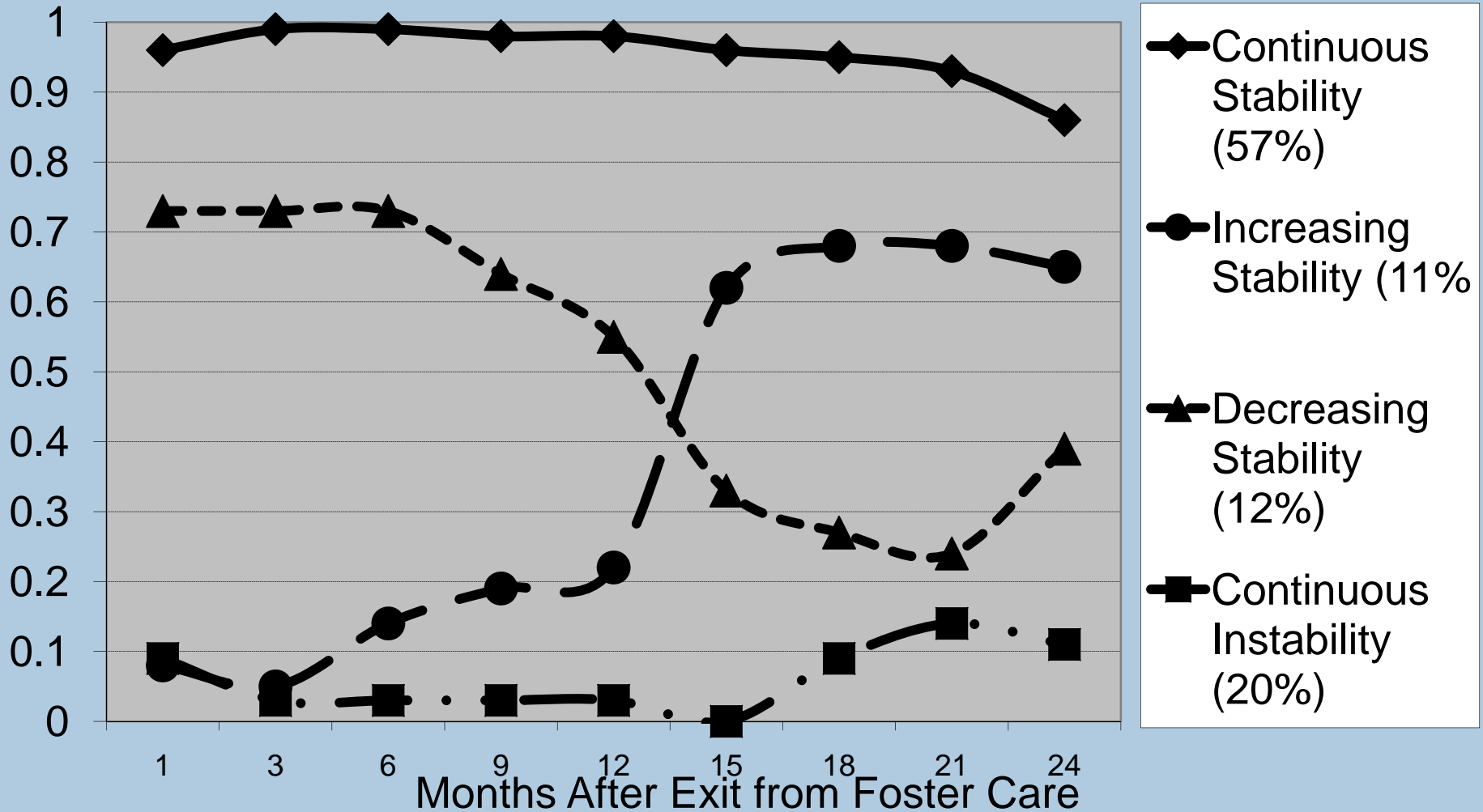
# Housing Trajectories



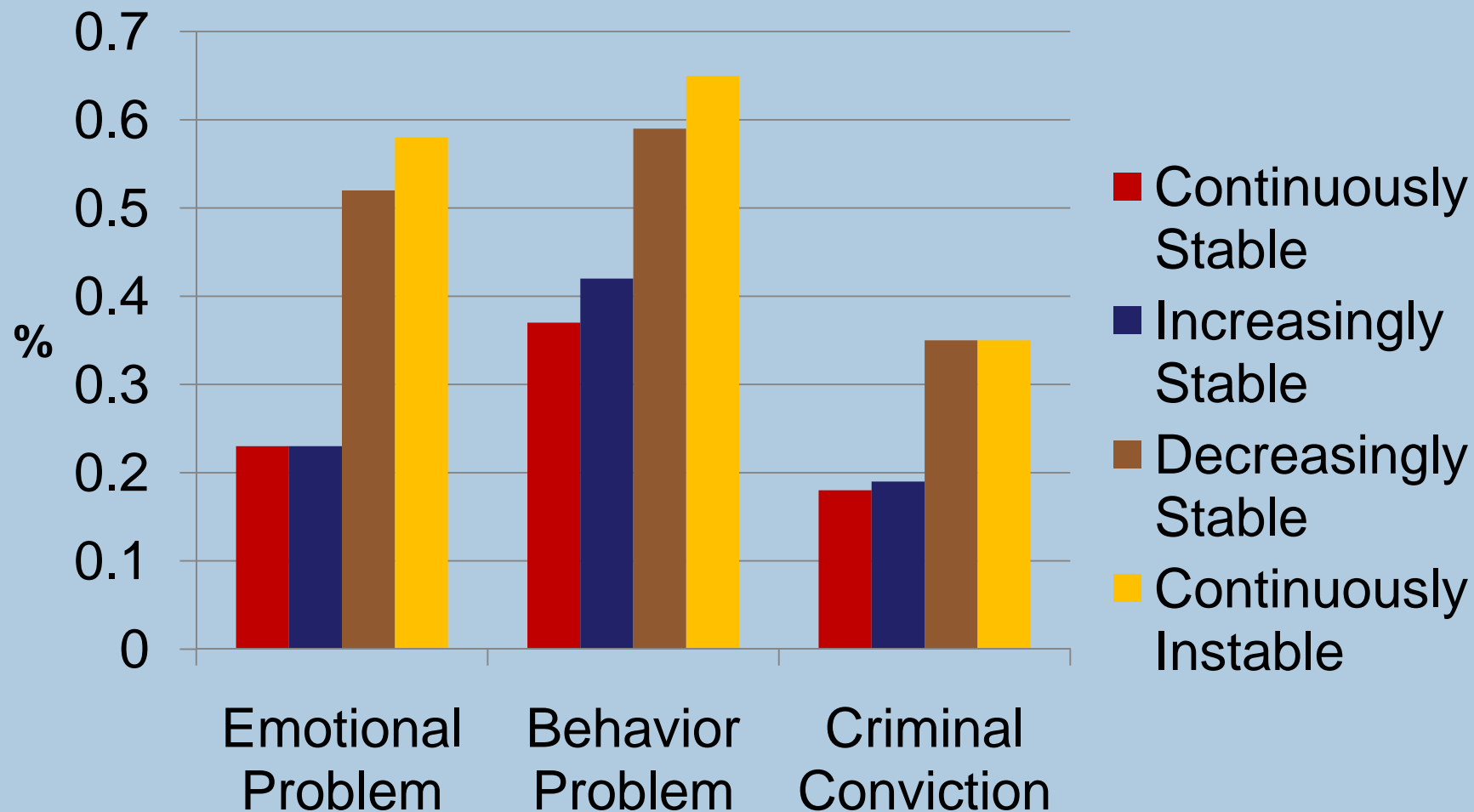
# Housing Trajectories



# Housing Trajectories



# Psychosocial Outcomes



# Detroit Aging-Out Study

## Implications

- Particular risk for housing instability
- Impacts adjustment in emerging adulthood
- Need for comprehensive services combined with supportive policies

# Family Housing Study

## Research Design



Chronicle / Brant Ward

- **Natural experiment:**
  - **Experimental group-** families whose lottery number allows them to receive a FUP voucher
  - **Control group-** families who receive housing services-as-usual
- *Random assignment of waitlist numbers*

# Family Housing Study

## Research Design

- **Longitudinal study**
  - families followed over time, collecting data on:
    - housing quality,
    - family stability,
    - mental & physical health,
    - academic achievement,
    - risky behaviors



# Research and Policy Questions

1. What are the long-term effects on family functioning and child well-being when inadequately housed families attain residential stability?
2. What social benefits and costs ensue from providing homeless families Housing Choice Vouchers as an alternative to out-of-home placement?